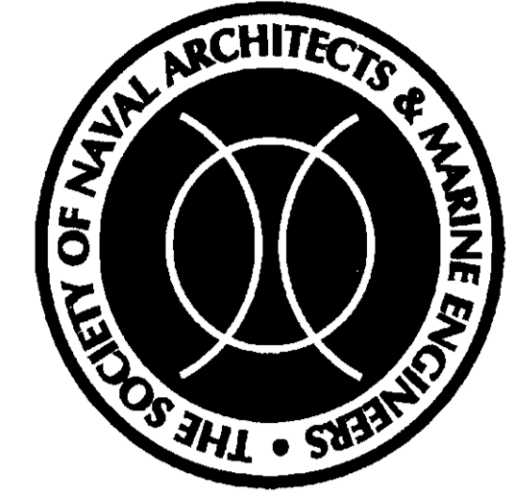
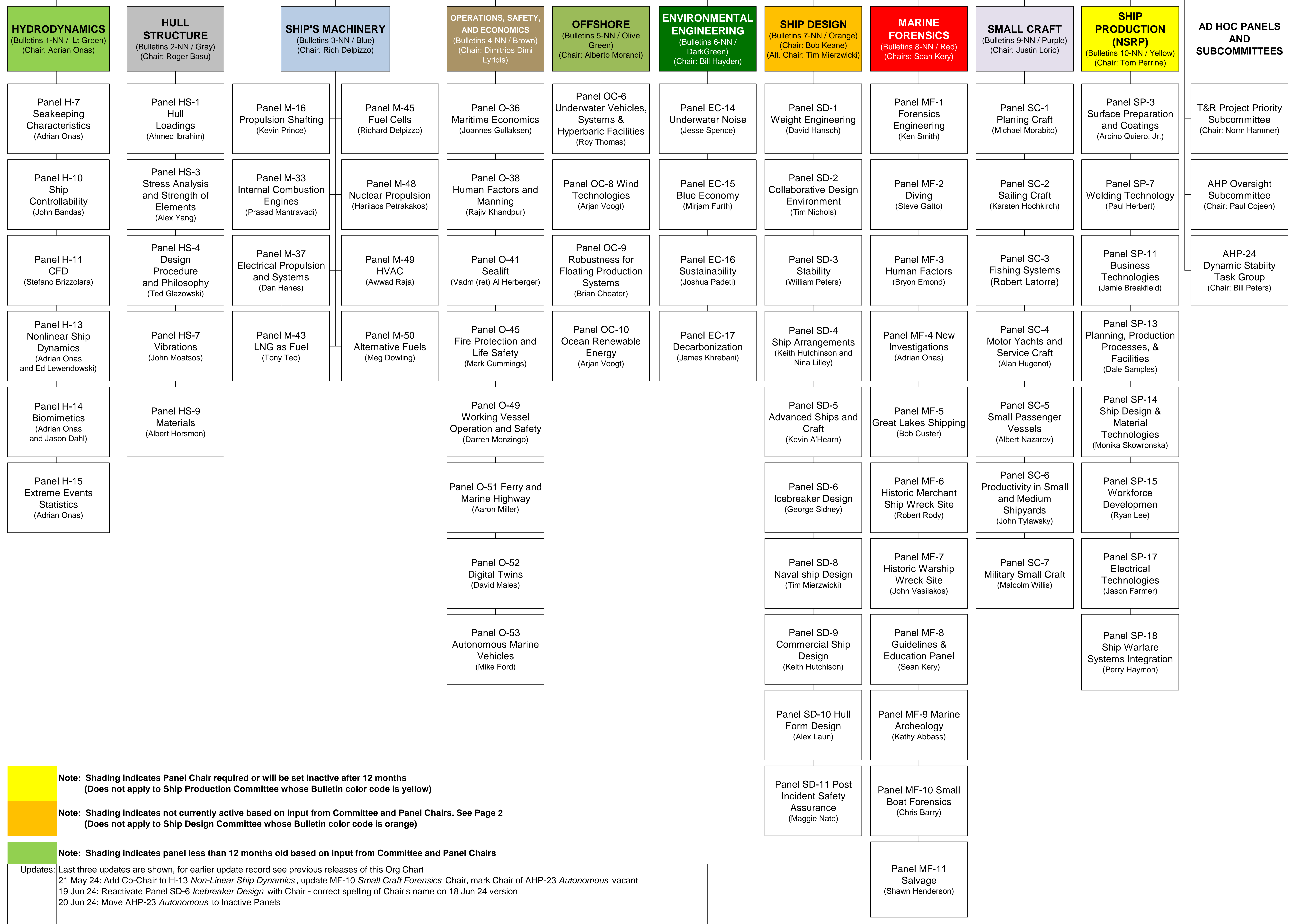


# Organization Chart of the Technical and Research Program



**SNAME COUNCIL AND EXECUTIVE COMMITTEE**  
President: Rick Spaulding

**T&R STEERING COMMITTEE**  
Chair: John Daidola



**Note:** Shading indicates Panel Chair required or will be set inactive after 12 months (Does not apply to Ship Production Committee whose Bulletin color code is yellow)

**Note:** Shading indicates not currently active based on input from Committee and Panel Chairs. See Page 2 (Does not apply to Ship Design Committee whose Bulletin color code is orange)

**Note:** Shading indicates panel less than 12 months old based on input from Committee and Panel Chairs

Updates: Last three updates are shown, for earlier update record see previous releases of this Org Chart  
 21 May 24: Add Co-Chair to H-13 *Non-Linear Ship Dynamics*, update MF-10 *Small Craft Forensics* Chair, mark Chair of AHP-23 *Autonomous* vacant  
 19 Jun 24: Reactivate Panel SD-6 *Icebreaker Design* with Chair - correct spelling of Chair's name on 18 Jun 24 version  
 20 Jun 24: Move AHP-23 *Autonomous* to Inactive Panels

**SNAME COUNCIL AND EXECUTIVE COMMITTEE**  
 President: Andrew Kendrick

**T&R STEERING COMMITTEE**  
 Chair: John Daidola

